

ONE

A Plus in Your Clinic



Simple&Smart



WHY CHOOSE OUR UNITS?

Simple&Smart

is the result of the idea of a few Italian dentists, tired to spend a lot of money for complex and too much technological dental units.

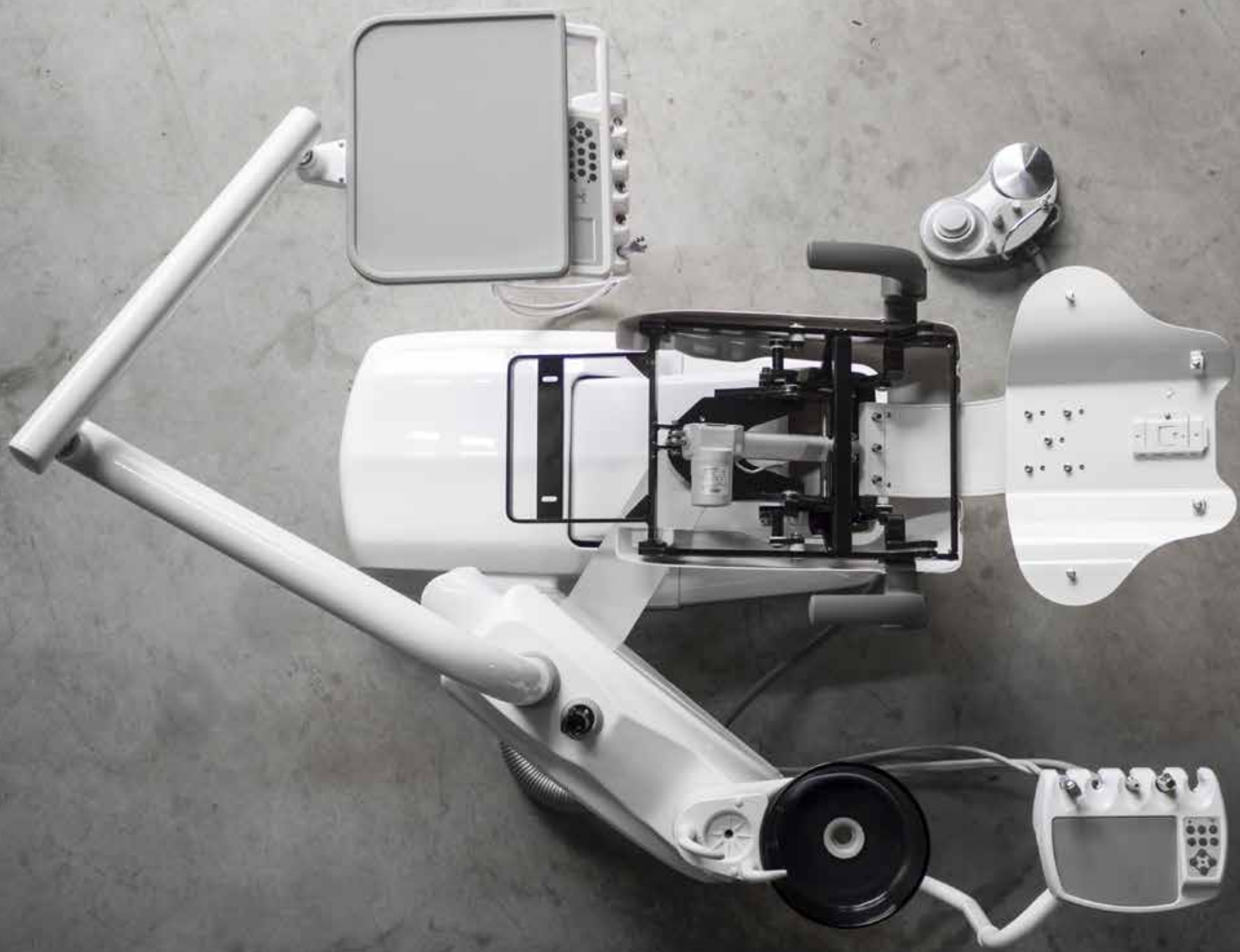
You should choose us because we **THINK DIFFERENT!**

We are introducing a different vision of dental unit, by making a unit that combines reliability, simplicity of installation and maintenance to a good price.

We reduced the amount of electronic parts in our equipment to the minimum, thus ensuring the machines reliability in operation.

This results in less occurrence of technical incidence and therefore, less costs for maintenance and assistance and a lower cost of purchase.

SO, **WHY** SPEND SO MUCH WHEN YOU CAN HAVE THE SAME RESULT WITH OUR **SS_ONE?!**



SIMPLE inside

less assistance need

easy installation

LESS electronics

for a

MORE

reliable **unit.**

That's why we are
what we are!

Less is **More!**

Simple&Smart
INSIDE

Configuration

what's better for you?

You can choose which kind of instrument tray is more suitable for you based on your habits. Also the choice of the spittoon is up to you, the dark glass spittoon is removable to make the cleaning operation easier, The ceramic one is not removable. No matter which one you prefer, there will be no additional costs!

HANGING TYPE



TOP MOUNTED



CERAMIC SPITTOON



DARK GLASS SPITTOON





SS_ONE

- Ergonomic seat
- Five cordon modules on doctor tray:
 - 1 syringe with 3 functions
 - 1 WP scaler, EMS compatible with 5 tips included
 - 3 cordons (2 with optic fibre, 1 without optic fibre) midwest type
- Assistant tray with:
 - 1 syringe with 3 functions
 - double cannula for strong and weak suction
- 15 function control panel on doctor tray
- 10 function control panel on assistant tray
- 3 programmable positions, plus reset position and last position
- X-ray viewer
- Multifunctional pedal
- Rotatable ceramic white or dark glass spitton
- Rotatable water unit
- Silicone, autoclavable pads for trays
- Double tank for pure water system (2 L) and disinfection system
- Halogen economic lamp with double intensity switch
- One left armrest
- Cushions in PU leather. High Quality PU production process. Anti snatch
- Doctor stool in PU leather with 3 adjustable positions

Features

Ergonomics

The **SEAT** and the **BACKREST** have been designed to improve the comfort and the stability of the patient on the chair. The particular ergonomics allows the doctor to work in a more suitable position. Working in 12 o'clock position will be easier.

The structure of the backrest is in metal and it is very thin, this way the doctor can get closer to the patient and have a better working position.

The design of the **chair base** grants a wider movement of the seat. It is thin and allows the chair to reach a lower position.





Structure

The **water unit** can rotate to allow the doctor to work even at 3 o'clock or a better positioning of the assistant.

The water unit's internal structure and the most fragile parts of the dental unit are now completely made in aluminum. This feature allows to reduce the chair weight, making the movement easier to manage. It also avoids the rust formation and grants a greater resistance of those parts which are most subject to wear.

The **SS_ONE** is equipped with double **tanks** for **pure water** and **disinfection system**. There is a tank inside the water unit for the disinfection and a second bigger tank, outside the water unit, with a capacity of 2 L for the pure water supply.

2 separated **airtight filters**, one for each suction cannula.





Customize

your dental unit

SS_ONE can be equipped, according to your needs, with the addition of many options. The internal simplicity of the machine remains the same but, following your requests, we can customize your unit in order to make it **PERFECT** for you!

Your experience and feedbacks help us to constantly improve our unit and find the **best solution** in any situation. We have a special team which can fulfill those requests that lie outside the standard production process. Therefore it is possible to adjust ergonomic and functional aspects of the unit according to your requests. If you have a **WISH**, we try to make it **REAL!**

Options available

FIBER LEATHER

More comfort with seams! The standard cushions in PU Leather are manufactured without seams as they can be cleaned more easily. On the other hand, the **Ultra Fiber Leather** seat, grants and higher sense of comfort to your patients. There is a standard range of colors but you can also customize it choosing within a range of more than 200 colors.



EXTRA STOOL

An extra stool can be suitable for your assistant. Different models are available to meet your requests and your needs.



RIGHT ARMREST

The right armrest is not included in the standard configuration as many doctors prefer not to have it. But, if you want to increase the comfort of your patients, you can add it to your customized chair.





Options

Lamps

LED OPERATION LAMP _ ECO

Economic LED lamp with sensor, 30.000 lux.



HALOGEN LAMP _ EDI

High quality halogen lamp, from 8.000 to 25.000 lux.
Made by **FARO** - Italy



LED LAMP _ MAIA

High quality LED lamp, from 8.000 to 35.000 lux.
Made by **FARO** - Italy



LED LAMP _ ALYA

High quality LED lamp, from 5.000 to 50.000 lux.
Made by **FARO** - Italy



Options

Media Kits



ENDOSCOPE KIT

- **Monitor** 24 V, color, 15", with glass protection
- **Intraoral Camera** Sony CCD 1/4, 28 image saved on receiver, auto focus, LED illumination
- **Arms Set** for monitor installation

MONITOR and **CAMERA** are installed on the dental unit. The arms allow the installation of the KIT. The camera is connected by cable to a docking station located behind the monitor. 28 images can be saved on a receiver. The **Endoscope KIT** is the PERFECT SOLUTION to show to your patients your work in real time.



SUPERMEDIA KIT

- **Panel PC** Installed on the unit, touch screen, wireless mouse and keyboard.
- **USB Camera** Connected to the panel PC _ Made by **CARESTREAM** - France
- **Arms Set** for monitor installation

PANEL PC and **CAMERA** can be installed also separately, but the BEST SOLUTION is to use them together.

The PC is touch screen and it works as a normal computer. Internet connection, RVG system, endocamera and all management programs can be controlled directly from your operation site. The combination with the camera allows to get and save all images you need.

Options

Handpieces

PNEUMATIC MICROMOTOR

Pneumatic micromotor without light - 20.000 rpm.
Internal spray.
Made by **TKD** - Italy



ELECTRIC MICROMOTOR

available from TKD Italy or Dassym Switzerland.
Both are LED illumination, brushless system,
40.000 rpm, internal spray.
See details in Micromotors & Controllers page.



HIGH SPEED TURBINE

Available with or without light - Internal spray.
Made by **TKD** - Italy



RAPID COUPLING for high speed turbine

Available with LED or halogen light
Made by **TKD** - Italy



CONTRA-ANGLE for micromotor

Contra-angle Synea Fusion, available with or without
light - internal spray (1:1 or 5:1). - EMS compatible.
Made by **W&H** - Austria/Italy



STRAIGHT HANDPIECE

Straight handpiece 1:1 Synea Fusion, single spray,
twist tension chuck system for handpiece and
contra-angle bur with Ø 2.35 mm
Made by **W&H** - Austria/Italy



TKD SCALER - TITANUS

Internal spray - EMS compatible.
Made by **TKD** - Italy



THREE WAY SYRINGE

Available for the installation on instrument tray or
assistant tray
Made by **FARO** - Italy



CURING LIGHT

Wireless with double battery
Made by **WOODPECKER** - China



KIT MOON CURING LIGHT

SIX curing programs, high-power LED light,
straight or pistol position. Lamp with a @8mm
optical fibre (@5mm optical fibre also available
for higher output power).

Made by **TKD** - Italy



SONOSURGERY HANDPIECE

Pneumatic handpiece with Komet tips intro set.
suitable for prophylaxis procedures or bone
surgery. The power of vibrations can be adjusted
with a rotating ring.

Made by **TKD** - Italy



Options

Micromotors & Controllers

The instrument tray can be equipped with one or more micromotors. Micromotors can be pneumatic or electric depending on the requirements of each customer.

For the installation of electric micromotors on our SS_ONE, there are three different solutions:

TKD Electric Micromotor

The first option is to install the TKD micromotor Definitive (one or more) with or without LED illumination.

This option has not any electronic control panel so the speed of the micromotor is simply managed through the pedal. The revers control is manual. There is no digital torque control.



TKD Micromotor and DUOPAD Control Panel

The second option is to install the TKD micromotor with the Duopad control panel. The DUOPAD control panel has an LCD touch screen. It is a panel that allows the digital control of the rotation speed, the reverse and the light, of one or more TKD DEFINITIVE motors.

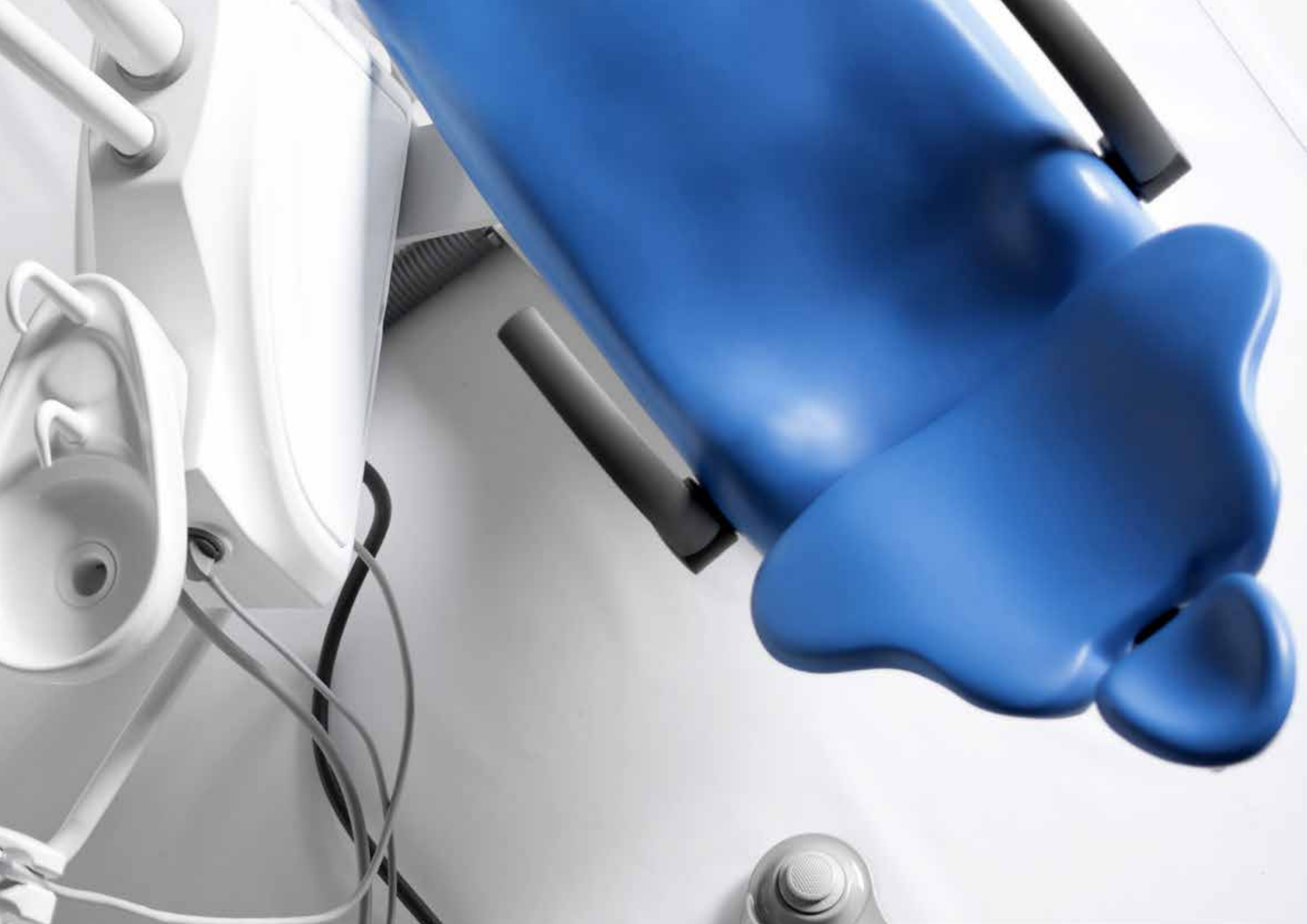


Dassym Micromotor and Control Panel

The last option is to install the DASSYM micromotor with its control panel. The controller is a pushbutton control panel that allows you to digitally manage one or more DASSYM micromotors. It can control the rotation speed, the reverse function, the torque and the two lights.

The DASSYM micromotor can only be installed in combination with the control panel. Compared to the TKD Duopad, it has the possibility to manage the torque and the double light (a classic LED light present in the micromotors, and a second BLUE light that allows verifying the presence of fillings). The control panel also allows you to customize the program with 3 different settings.





Valves



On all our dental units we install **DURR** valves, according to the specific requests of each customer and to the type of suction system present in the clinic.

The SS_ONE dental unit is preset by default to be connected to a **liquid** or **wet** suction machine.

In addition, it is possible to integrate the unit with:

1. **CS1 AIR/WATER SEPARATOR** to fit the unit for the connection to a dry suction motor.
2. **PLACE SELECTION VALVE** in case of multiple installations (two units or more connected to a single suction motor).
3. **SPITTOON BOWL VALVE** to convey the drain of the basin towards the aspirator (in case there is just one tube at the base of the chair).
4. **AMALGAM SEPARATOR** _ by S&S, a filter that allows you to comply with the international regulation on the amalgam separation while containing the costs.
5. **VENTURI SYSTEM** to be installed in those situation where there is not a suction machine.

It is very important to analyze the situation of the clinic before ordering the unit. The S&S staff will help and suggest you the best solution to fit the unit to your system.



Options

Instruments Cart

In replacement to the instrument tray you can have your SS_ONE with the instrument cart.

The cart has the same equipment as the instrument tray:

- Five cordon modules on doctor tray:
 - 1 syringe with 3 functions
 - 1 WP scaler, EMS compatible with 5 tips included
 - 3 cordons (2 with optic fibre, 1 without optic fibre) midwest type
- 15 function control panel
- X-ray viewer



Options

Stand Alone Unit

The SS_ONE can also be configured as a STAND ALONE CHAIR to allow you to use the chair for the most suitable purpose.





Color Table

PU LEATHER



Light Blue



Navy Blue



Dark Blue



Grass Green



Apple Green



Yellow



Pink

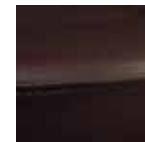
FIBER LEATHER



Blue



Dark Blue



Brown



Champagne



Green



Orange

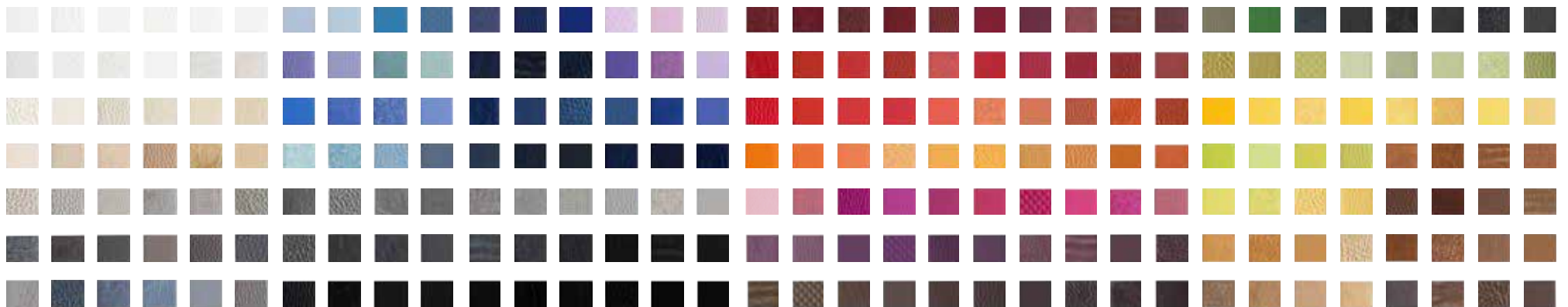


Red

Colors

Customized Leather

If you select the Fiber Leather upholstery, and you are not satisfied about the standard range of colors available, you can also customize the upholstery with your favourite color. A range of more than 200 colors is available to grant you the widest choice ever!



Options

Maintenance

Our aim is to be as fast as possible in assisting our Customers.

That's why we have all the spare parts ready for the delivery and they can be shipped within 12 hours from the reception of the request.

In order to give you the possibility of being even faster than this, in solving your possible problems, we created **2 SPARE PARTS KITS** which include the main electric PCB of our dental unit SS_ONE and other parts, such as filters, membranes, etc., that can be replaced.

Our Spare Parts kits are optionals that can be really helpful in case you have a problem. If you keep these kits in your warehouse or clinic, you can **SOLVE** any possible problem in a **SHORT TIME**.

BASIC SPARE PART KIT



includes:

- ALL THE ELECTRICAL BOARDS OF THE UNIT (1 Main Board, 1 Transformer, 1 PCB for the water unit, 1 Assistant Tray PCB, 1 Instrument tray PCB).
- 2 EXAGONAL MEMBRANES
- 1 RECTANGULAR MEMBRANE
- 2 SUCTION FILTERS
- 1 BASIN FILTER
- 1 REGULATION VALVE
- 2 CORDON SPRINGS.

COMPLETE SPARE PART



includes:

- ALL THE ELECTRICAL BOARDS OF THE UNIT (1 Main Board, 1 Transformer, 1 PCB for the water unit, 1 Assistant Tray PCB, 1 Instrument tray PCB).
- 4 EXAGONAL and 2 RECTANGULAR MEMBRANES
- 2 SUCTION FILTERS
- 1 BASIN FILTER
- 1 REGULATION VALVE
- 2 CORDON SPRINGS
- 1 WEAK and 1 STRONG SUCTION HANDLE
- 2 SYRINGE TIPS
- 1 OPTIC FIBER CORDON
- 1 ASSISTANT TRAY LABEL and 1 INSTRUMENT TRAY LABEL
- 1 BOTTLE FOR DISINFECTION SYSTEM
- SET OF SILICONE PADS
- 1 TAP FOR BASIN and 1 TAP FOR GLASS

Options

Maintenance

The concept is always the same, grant to the customer the best service possible.

The purpose is giving to the customers all the necessary products for the ordinary maintenance of our dental unit.

Our **CLEANING KIT** contains all the most suitable products to clean and sanitize our SS_ONE, filters, silicone parts, etc.. that can be replaced in case of need.

CLEANING



Includes:

- 2 SUCTION FILTER,
- 1 BASIN FILTER
- 1 WEAK SUCTION HANDLE
- 1 STRONG SUCTION HANDLE
- 1 SET OF SILICON PADS.
- 1 PULY JET by CATTANI ITALIA to clean the suction tubes, kill the bacteria, avoid to have bad smells inside your clinic and avoid any tubes obstruction.
- 1 AQUA PLUS to clean all the internal system of the unit through the disinfection system installed inside the unit. It prevents the formation of microfilm inside the tubes and so, any possible damage to the small holes of the instruments.
- 1 ESENFIX of MICROZID to keep the dental unit surface clean avoiding possible damages to the leather and the sensible plastic parts. It is alcohol free.

Company

and Services

Production



The production process is the heart of our company, and for this reason we FOLLOW, with particular care **every stage**, starting from the choice of materials, paints and components to the assembly and final control. Each unit, in fact, is subjected to a careful double check, carried out by our specialized technicians, during assembly phase and before shipment. Our **ISO 9001** and **ISO 13485** standards ensure that these processes are actually carried out and respected.

Stock



We want to be extremely **FAST** in deliveries, so we always have in stock **several units**, in large part, already assembled and **READY** to be configured according to our Customers needs.

All the necessary parts and all the options are **available in stock** and we can complete the assembly of the unit and arrange the delivery in a few days.

Services



Our staff is always at your disposal **to solve any kind of problem** in the shortest way! Allow the customers to save time and money is a priority according to us and that's why we try to give them the best support service possible. Live assistance, trainings, reports and videos created to solve any particular issue you can face.

These are only few services we provide to our customers. See the review page on our website to check our **customers' satisfaction**.

Other Services



WARRANTY EXTENTION

We grant one year of standard warranty on our **SS_ONE**, but, if you want, you can extend the warranty period **up to 5 years**.



LIVE ASSISTANCE

SKYPE SERVICE: **simple.smart.ita** or **simple.smart.assistance**

Whatsapp: +39. 340 5872688

We are always at your disposal. You just have to contact our live assistance department on Skype or Whatsapp. Our technical staff will ASSIST your technicians to solve any issue in few minutes.



REPORTS ON FILES

Complete **PDF reports** are available to be sent by mail.

Detailed information for **PROBLEM SOLVING** are explained in a specific manner on the bases of the problem you have indicated.



WATCH OUR VIDEOS

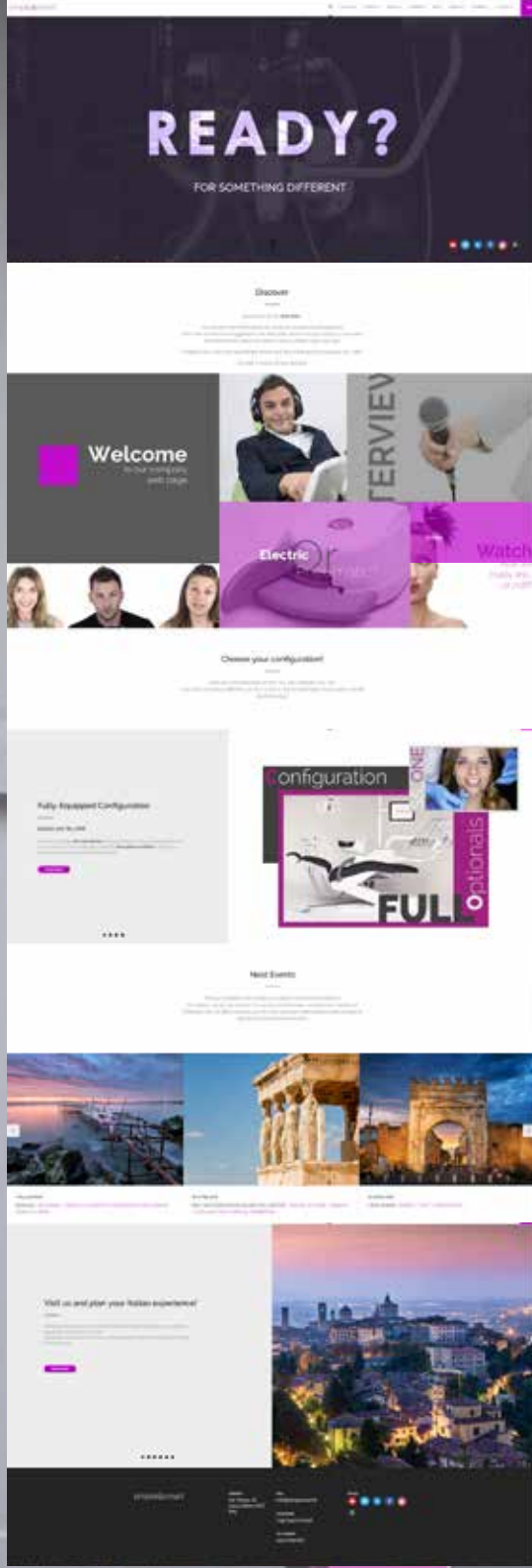
Detailed information on the unit, on its configuration, on the options available, the maintenance, sanitization, etc.. in order to set up and take care of your chair in the best way possible.

INSTALLATION GUIDE with our video tutorials. All available on our **WEB SITE**: www.simplesmart.it

Website
www.simplesmart.it

Do not miss to visit our new **web site** www.simplesmart.it
More information, videos sections and many other services for
dealers and final customers!

We created this website to support our dealers and Customers in
the best way possible, you can have a complete overview on our
company and our product. You can even configure your customized
unit. Using our **Configurator** you can receive a personalized quotation
without any purchase obligation.



10

simple&smart

Shipment

How?

The shipment can be arranged according to each customer's needs. We usually ship the unit in a **SINGLE WOODEN CASE**, but, **if required**, we can ship the unit in **TWO SEPARATED** boxes, in order to get the delivery to the clinics easier.

The two separated wooden boxes are smaller in size and less weighted so the download from the truck is easy even without a lifter and the reduced dimensions allows an easy storage while waiting for the installation.

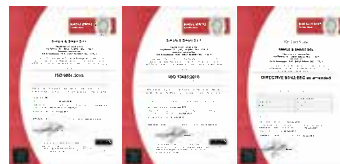


Certifications



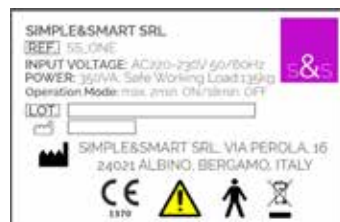
Certified Technicians

To ensure a PERFECT installation and a proper after sales assistance service, Simple&Smart certifies all the distributors' technicians, after attending a specific training, an Enabling Certificate is issued to the technician, all this, in order to provide a safe and reliable product to the Customers and a professional and precise technical support.



ISO & CE Certificates

All our procedures, are compliant to the severe ISO standards. The ISO 9001 and ISO 13485 certification joint to the CE CERTIFICATE of Conformity, guarantee the quality of our products and services.



Product Label

The most important TECHNICAL INFORMATION on the product are clearly indicate onto the label applied on each unit.



Via Perola 16, Albino
24021 - Bergamo - ITALY

info@simplesmart.it
www.simplesmart.it

Phone: +39 (0)35-0172056
Skype: simple.smart.ita